



BCBC Energy Efficiency Requirements for Part 9 Buildings

**Module 4
HVAC & Service Water Heating
BCBC 9.36.
2014**



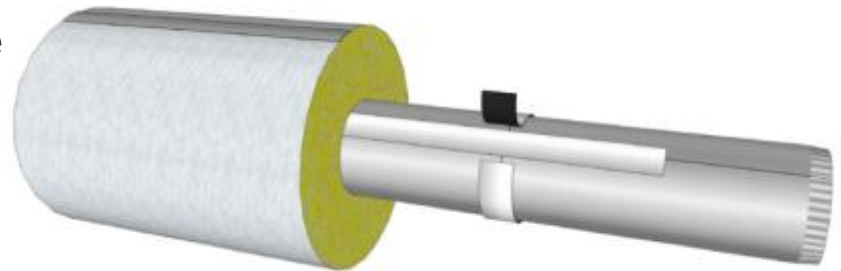
9.36.3. HVAC

- Heating and air-conditioning equipment must be located inside the conditioned space, unless it is designed to be located outside



9.36.3. HVAC Ducts

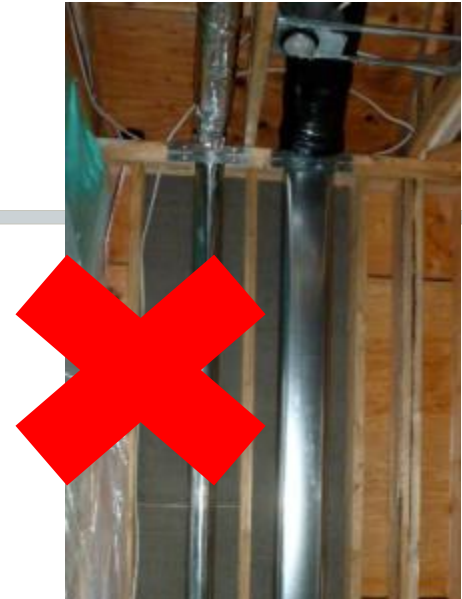
- Ducts outside the heated envelope, or within an exterior assembly:
 - All joints in the ducts must be sealed with sealant, mastic, or foil faced tape
 - Fabric duct tape is not permitted





9.36.3. HVAC Ducts

- Ducts outside the heated envelope, or within an exterior assembly must be insulated to same level as required for above grade walls





9.36.3. Piping for Heating & Cooling Systems

- All piping for heating and cooling systems must be located inside the conditioned space.
- If located outside or within an exterior wall, the pipes must be insulated to same level as required for above grade walls





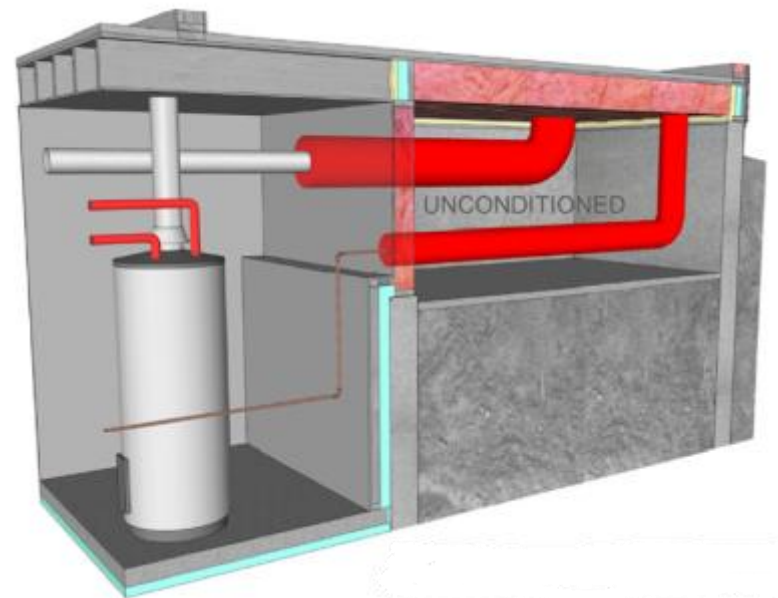
9.36.3.6. Temperature Controls

- Heating & cooling systems must have thermostats accurate $\pm 0.5^{\circ}\text{C}$
- Heating & cooling systems with separate controls must prevent both cooling & heating to be activated simultaneously



9.36.4. Service Water Heating

- The first 2 m of piping from a storage tank or heater must be insulated with pipe insulation
- If piping is located outside the heated envelope, it must be insulated to no less than the effective R-value of exterior walls.





9.36.4. Service Water Heating

- If hot water piping system has recirculation, the entire hot water system must be insulated.