

Annex A (informative)

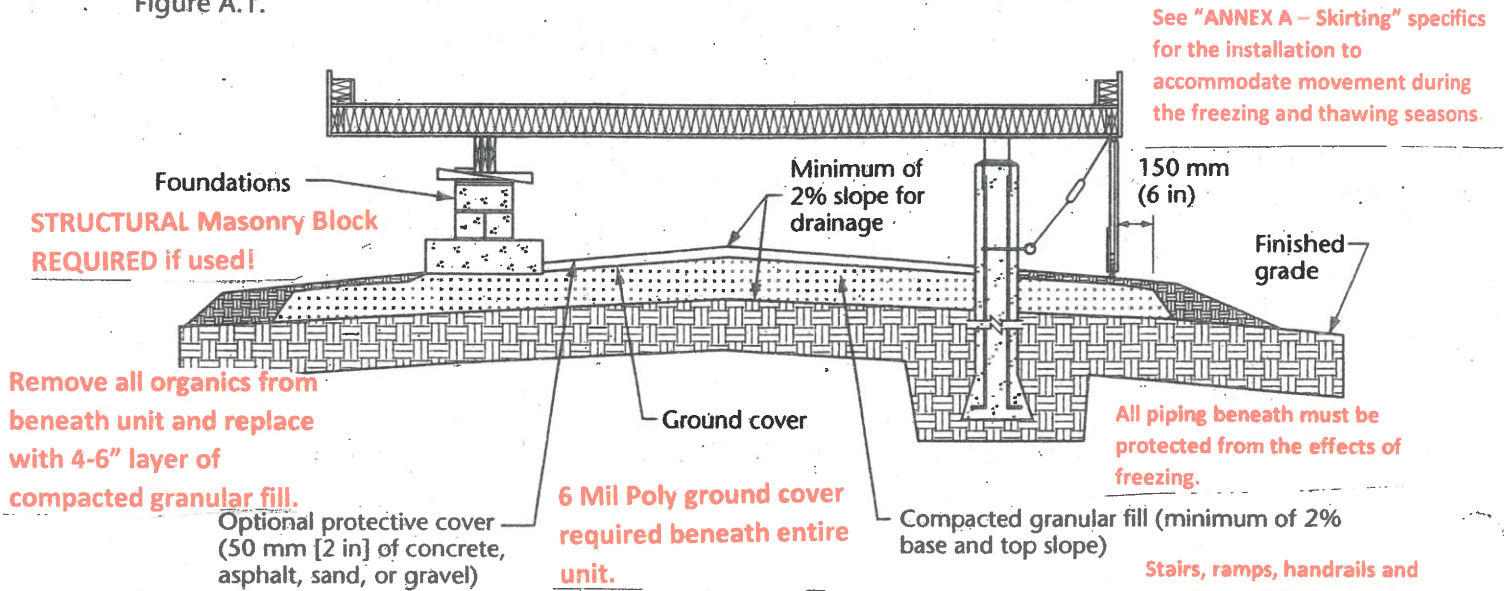
Site preparation

Compliance with the 2012 BC Building Code

Note: This Annex is not a mandatory part of this Standard.

A.1 General

A typical example of site preparation for concrete pile or surface pier foundation systems is shown in Figure A.1.



Notes:

- (1) The ground cover extends at least 150 mm (6 in) past the sides of the manufactured home.
- (2) The backfill base and ground cover are graded centre to outside or from side to side with a minimum slope of 2%.
- (3) The surrounding finished grade slopes away from the home.

All connectors/fasteners to be ACQ APPROVED where in contact with preservative pressure treated wood. All lumber in contact with the ground or within 6" of the ground shall be ACQ APPROVED lumber.

Figure A.1
Site preparation
 (See Clauses 5.1.2 and A.1.)

The Building Sewer Pipe shall be not less than 4' dia. terminated above grade, provided with a tamperproof terminal connection that is capable of being repeatedly connected, disconnected and sealed, a protective concrete pad and a means to protect it from frost heave.

Support of piping beneath unit to be as follows: ¾ - ½ copper 8ft intervals; ¾ - ½ plastic 4ft intervals; ABS/PVC 4ft intervals and at changes in direction. To be supported from the underside of the unit and not from the ground.

If a surface type foundation support system is used then provisions for periodic maintenance and re-leveling shall be provided.

Annex E (informative)

Skirting

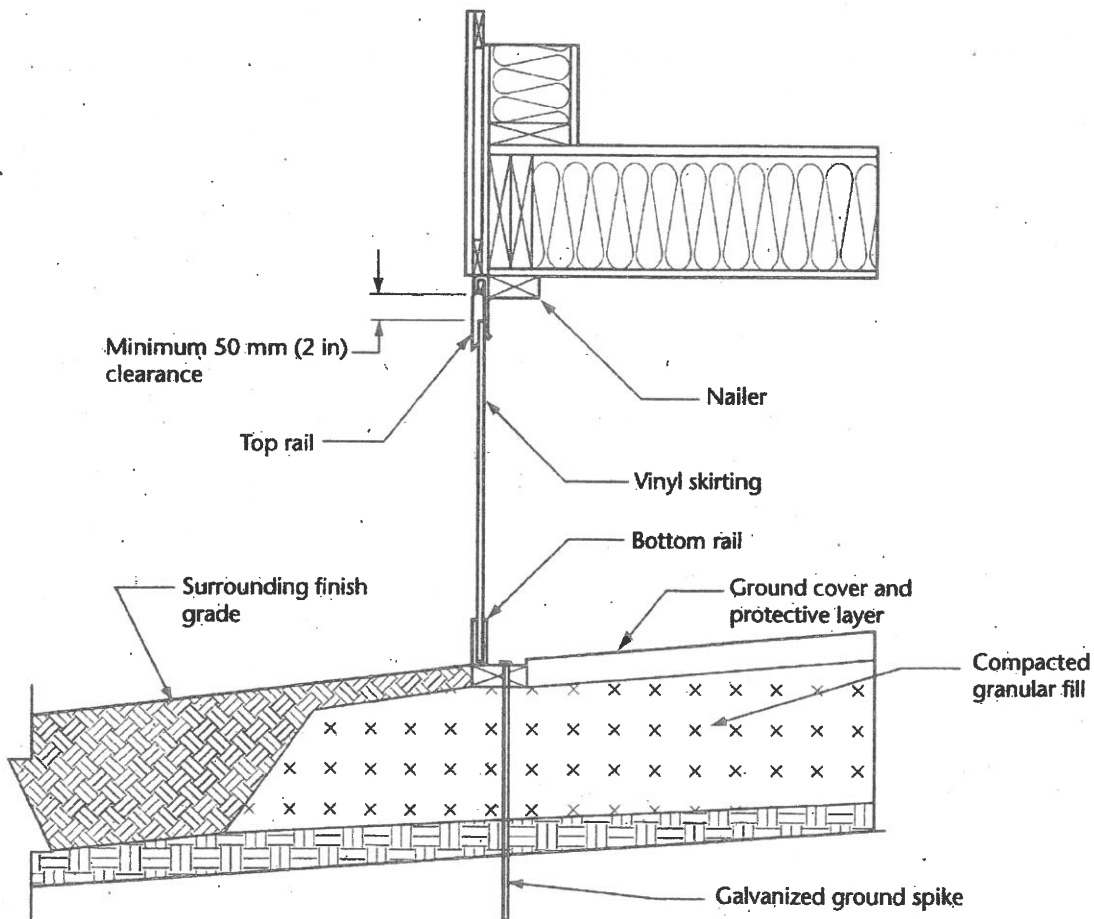
Note: This Annex is not a mandatory part of this Standard.

E.1 General

Skirting helps keep debris from accumulating under a home and should be used. Skirting also helps prevent penetration of cold air; however, it should not be considered adequate protection for exposed waterlines.

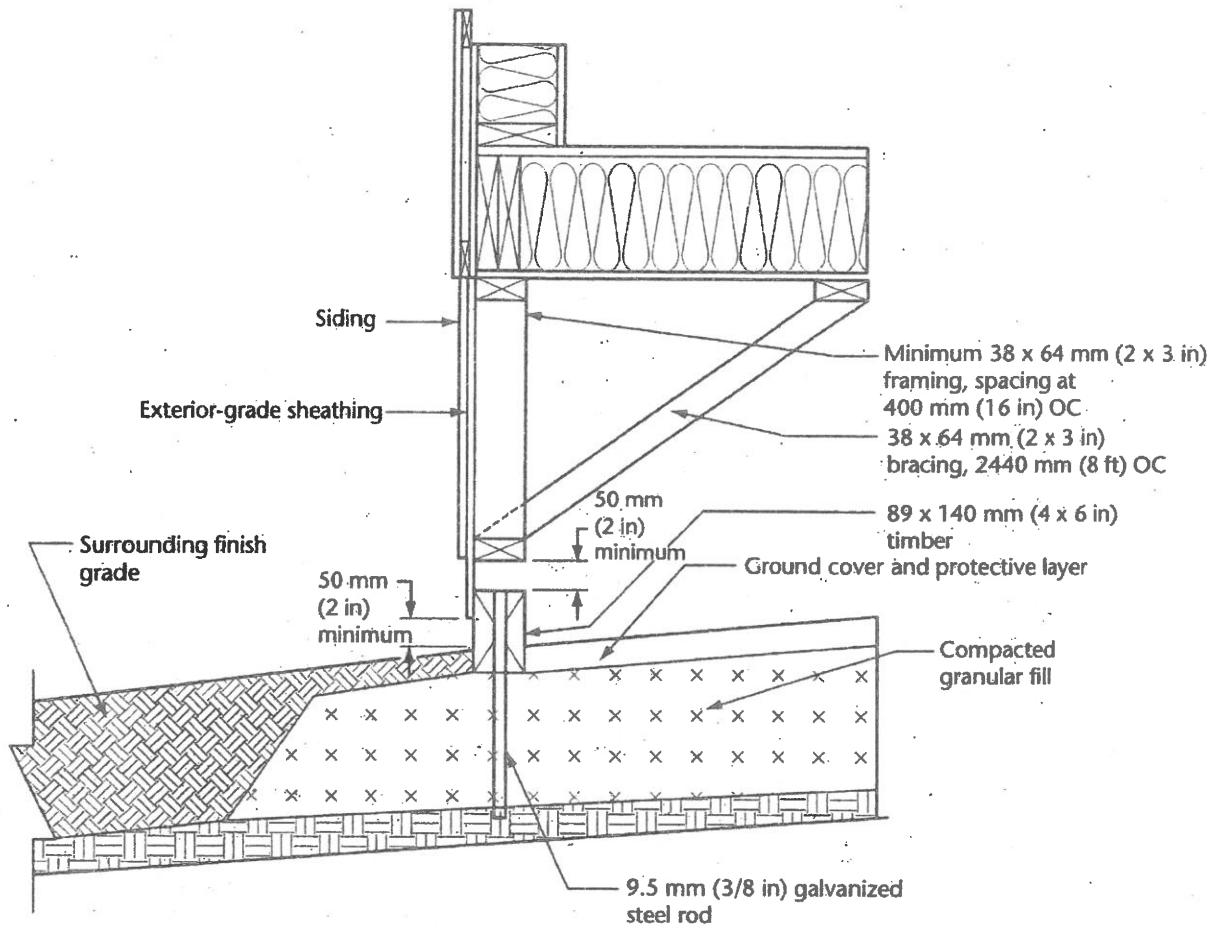
E.2 Designs

Skirting designs vary depending on the skirting material, lot contours, and foundation system. Some skirting systems include channels and take-up devices. Typical systems are shown in Figures E.1 to E.3.



Note: Movement should be provided for in soils susceptible to frost heave.

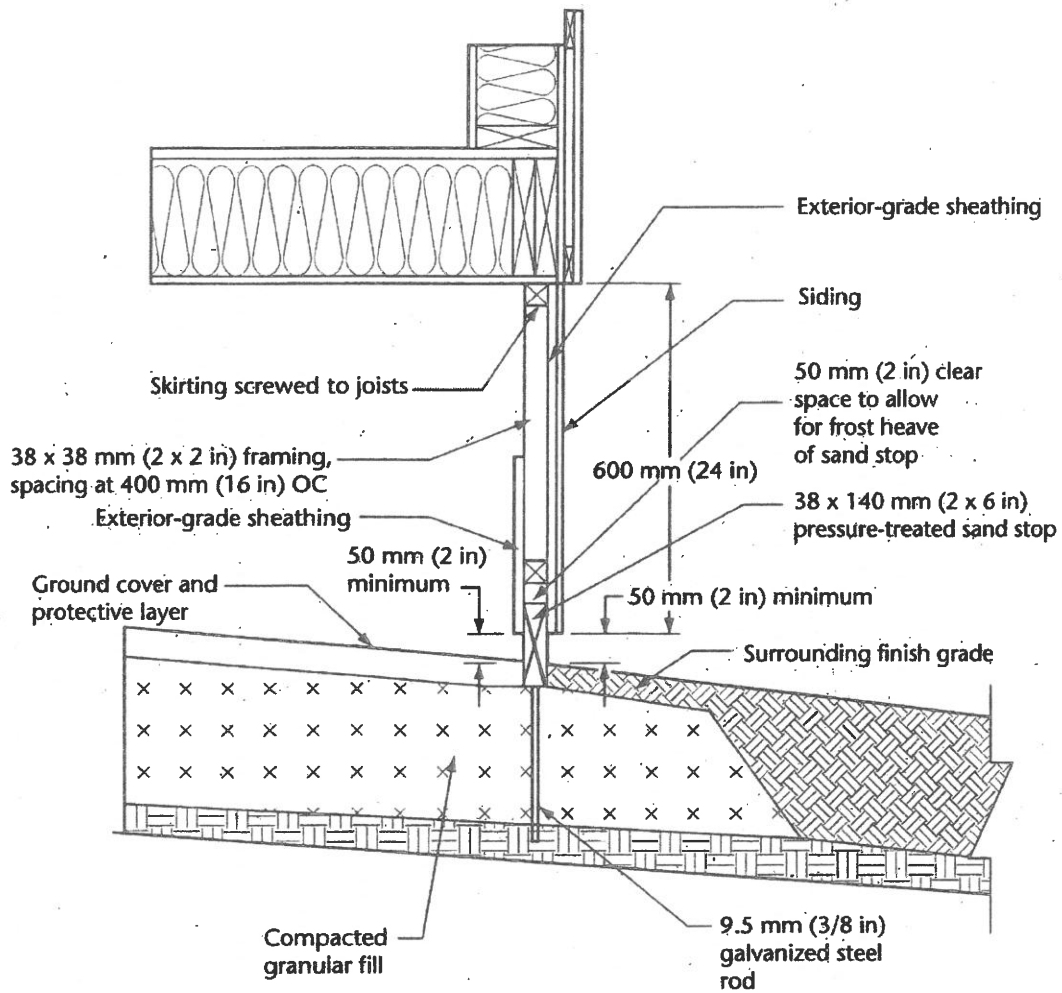
Figure E.1
Skirting system (Example 1)
 (See Clauses 9.1 and E.2.)



Notes:

- (1) Movement should be provided for in soils susceptible to frost heave.
- (2) Wood in contact with the ground should be treated with a pressure preservative.

Figure E.2
Skirting system (Example 2)
(See Clauses 9.1 and E.2.)



Notes:

- (1) Movement should be provided for in soils susceptible to frost heave.
- (2) Wood in contact with the ground should be treated with a pressure preservative.

Figure E.3
Skirting (Example 3)
 (See Clauses 9.1 and E.2.)